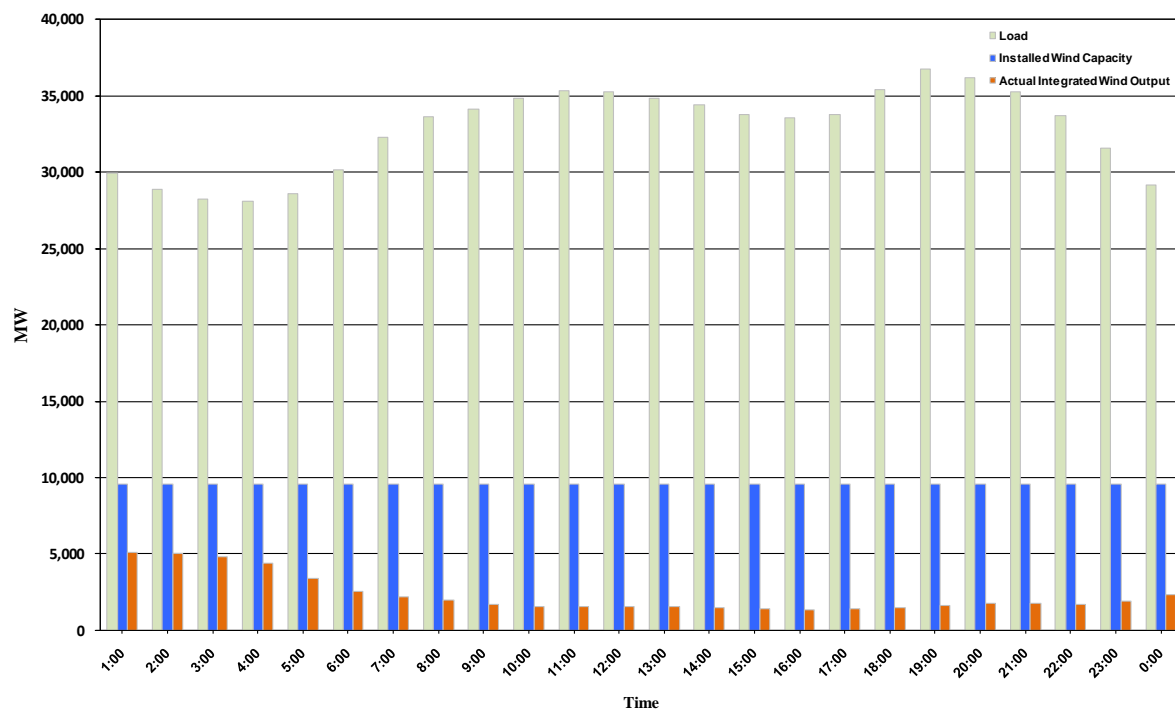




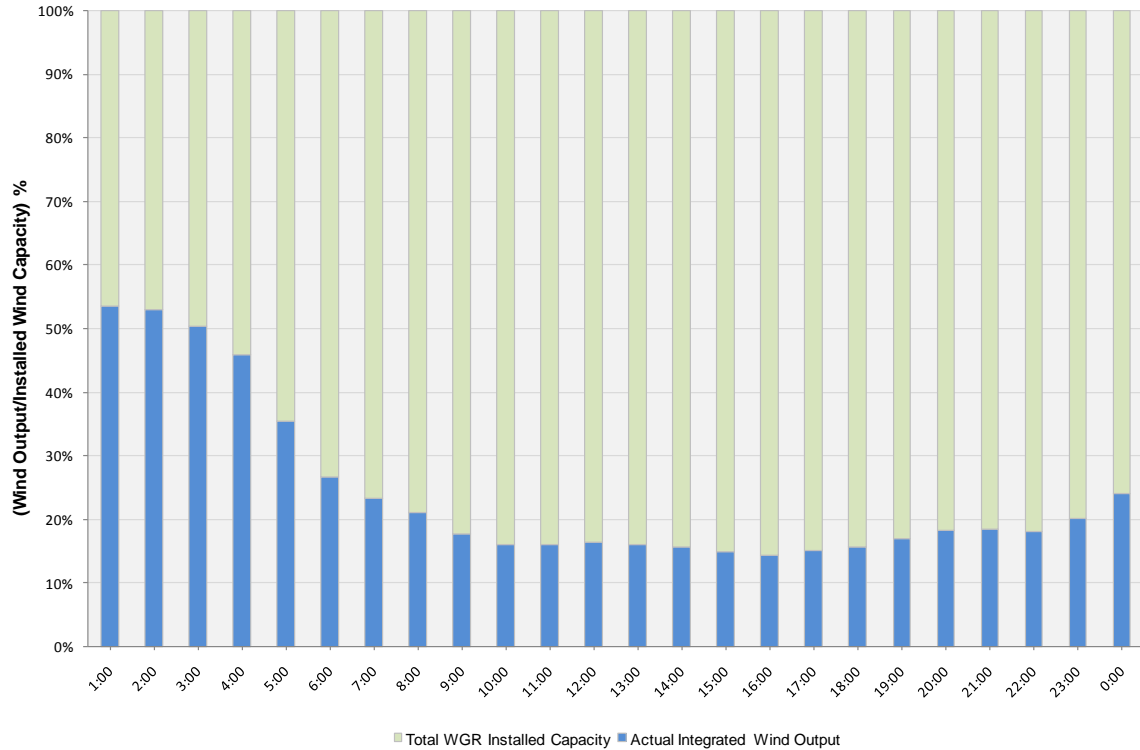
ERCOT Grid Operations Wind Integration Report: 12/28/10

Peak Load	36,778 MW
Load Peak Hour	19
Wind Record 12/11/10	7,227 MW
Max Wind Value	5,287 MW
Wind Peak Hour	00:19:00
Wind Integration %	17.53

Hourly Average Actual Load vs. Actual Wind Output
12-28-2010



Actual Wind Output as a Percentage of the Total Installed Wind Capacity
12-28-2010



Actual Wind Output as a Percentage of the ERCOT Load
12-28-2010

